



Whilst every effort is made to give a fair description, the accuracy of these particulars is not guaranteed, neither do they constitute an offer or contract.

**MATHESONS ESTATE AGENTS** have not tested any apparatus, equipment, fitting or services and so cannot verify that they are in working order. The buyer is advised to obtain verification from their solicitor or surveyor. Measurements are correct to within +/- 6 A sonic tape is used. None of the statements contained in these particulars or any of our properties are to be relied upon as a representation of fact.

166 Manor Park Road  
Harlesden  
London  
NW10 4JT  
T: 020 8965 2250  
E: sales@mathesonsestates.com  
www.mathesonsestates.com



## Church Road, London, NW10 9EG

### Asking Price £280,000 Leasehold



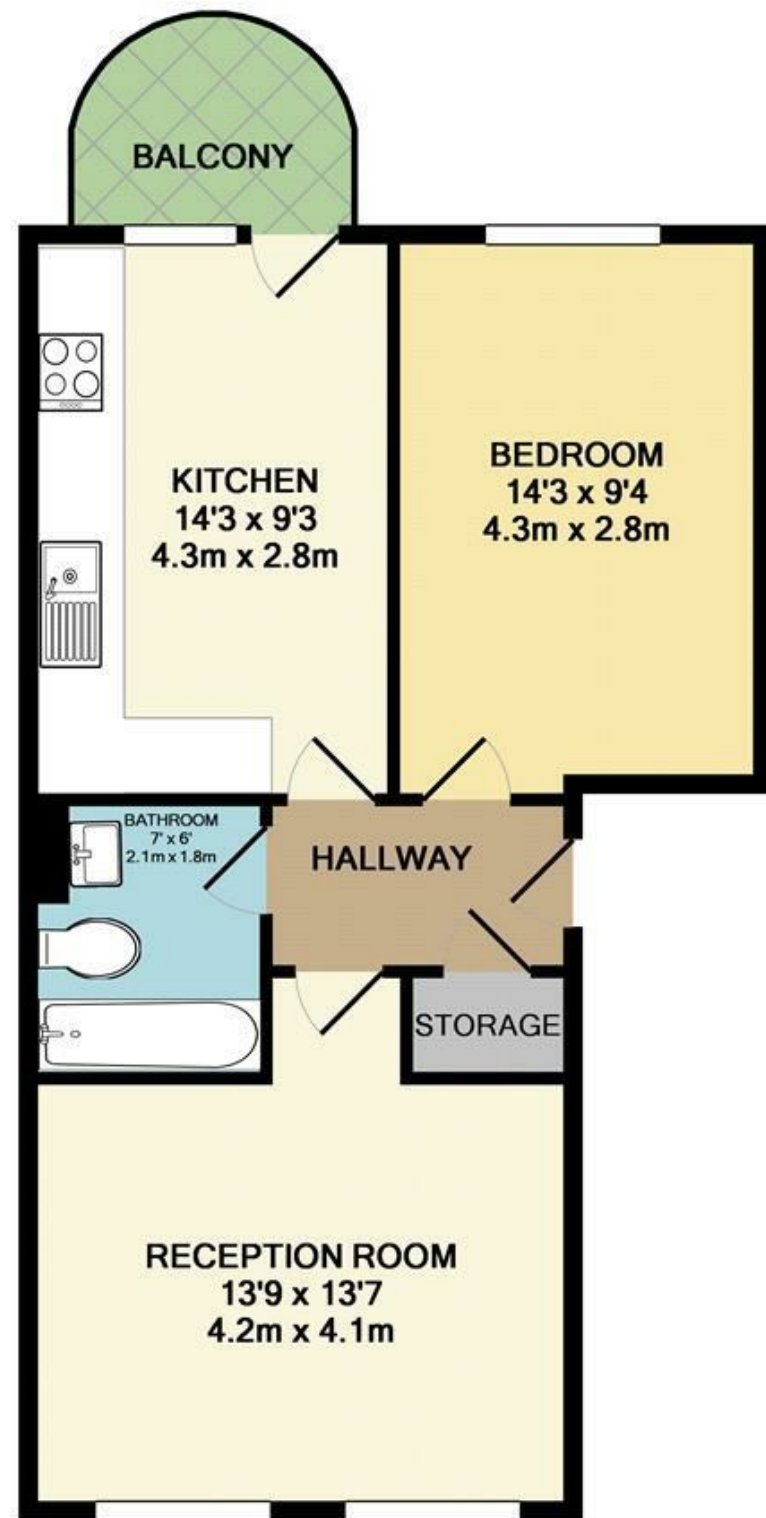
#### KEY FEATURES:

- ONE BED FLAT
- SEPARATE RECEPTION ROOM
- DOUBLE BEDROOM
- MODERN FITTED KITCHEN
- TILED BATHROOM
- PRIVATE BALCONY
- STORAGE SPACE
- ALLOCATED PARKING

MODERN ONE BEDROOM PURPOSE BUILT THIRD FLOOR (TOP) APARTMENT.

The property benefits from a SEPARATE BRIGHT AND SPACIOUS reception room, MODERN FITTED KITCHEN / DINER leading to a PRIVATE BALCONY. TILED BATHROOM, one double bedroom, AMPLE STORAGE SPACE, ALLOCATED PARKING.

Ideal for a buy to let investment or a first time buyer. Located within close proximity to schools, shopping amenities, and bus routes on Church Road. Nearest station is Neasden Station (Jubilee Line).



TOTAL APPROX. FLOOR AREA 506 SQ.FT. (47.0 SQ.M.)

Whilst every attempt has been made to ensure the accuracy of the floor plan contained here, measurements of doors, windows, rooms and any other items are approximate and no responsibility is taken for any error, omission, or mis-statement. This plan is for illustrative purposes only and should be used as such by any prospective purchaser. The services, systems and appliances shown have not been tested and no guarantee as to their operability or efficiency can be given

Made with Metropix ©2016